



## Contents

Contents .....	1
Files to download.....	2
Documentation .....	2
Self extracting program files.....	2
The procedure for installing the AGE200 software .....	2
Start up AG200 system .....	2
Deactivate the actual installed AGMaster software.....	2
Install the AGE200 software.....	2
Run the new software.....	2
Install the AGE200 software.....	3
Prepare the Trans-Computer.....	3
Prepare the PSR-Computer .....	5
Prepare your computer to control the AG200 system .....	6
Start up AG200 system .....	7
Update the AGE200 software.....	7
Trouble shooting.....	8
Deactivate the AG200 software.....	8
On Trans- and PSR Computer and on your control computer .....	8

<b>Revision: 1</b>	<b>Released</b>
date: Wednesday, September 24, 2003	date: September 03
by:	by: Bahne Carstens
Q:\QMManuals\AGE200_install\AGE200_install.doc	

---

## Files to download

---

### Documentation

[On-Offprograms.pdf](#)

[AGE200\\_install.pdf](#) – this file

[AG200-manual.pdf](#)

### Self extracting program files

#### [control.exe](#)

Contains the installation program and all necessary files that have to be on your computer that has to control the AG200 system.

#### [trans.exe](#)

Contains the installation program and all necessary files that have to be on the Trans-Computer.

#### [psr.exe](#)

Contains the installation program and all necessary files that have to be on the PSR-Computer.

---

## The procedure for installing the AGE200 software

---

In case the AGE200 software is already installed please proceed at  
→Update the AGE200 software←

---

## Start up AG200 system

---

- Start the ageSoundRec program with the new icon on your desktop
- Start the mc2recorder program with the new icon on your desktop
- Switch the AG200 systems on power
- For further steps refer to the document “AG200-manual.pdf”  
Update the AGE200 software

### Deactivate the actual installed AGMaster software

Follow the description in the “On-Offprograms.pdf” document. This will ensure that the old software is no longer active.

### Install the AGE200 software

The next section in this document describes the steps to do the installation on all three involved computers.

### Run the new software

The document “AG200-manual.pdf” shows how to operate the AG200 system with the new software.

## Install the AGE200 software

Check if the old software is completely inactive. The Trans- and PSR-Computer should show a blank desktop with some standard icons.

### Prepare the Trans-Computer

#### Unpack the trans.exe file to d:\soft\age200 on your Trans-Computer

Copy the file trans.exe to your Trans-Computer into the folder d:\soft\age200.

Execute this file and confirm that the Unzip to folder is set to d:\soft\age200 (see Figure 1).

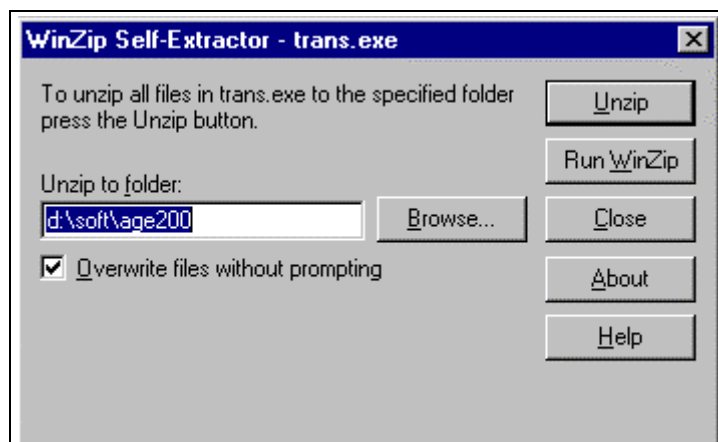


Figure 1: click the Unzip button

Close the self extractor window and open the folder d:\soft\age200 with the windows explorer:

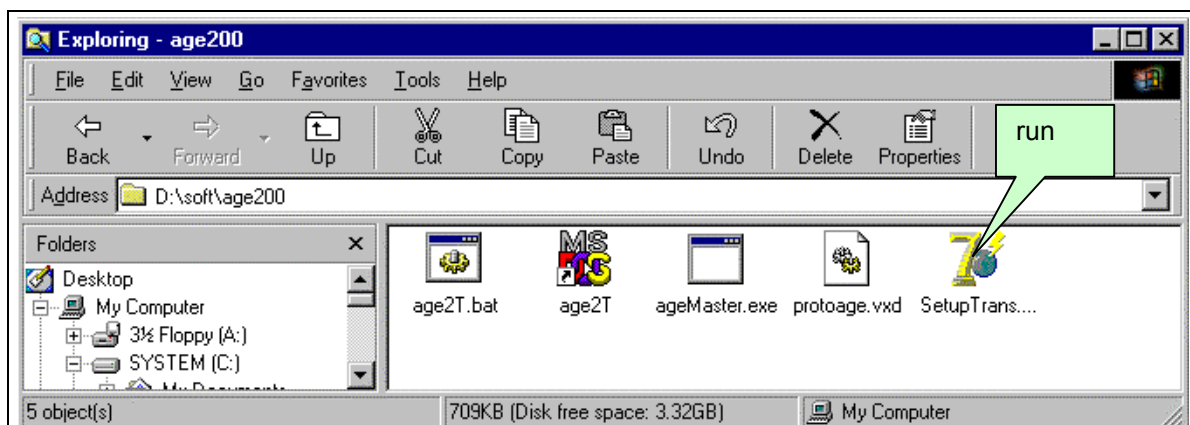


Figure 2: Trans-Computer folder after executing trans.exe

#### Run SetupTrans.exe

Doubleclick the SetupTrans.exe to execute this file. There will come up three windows to perform the complete installation (see Figure 3 to Figure 5).

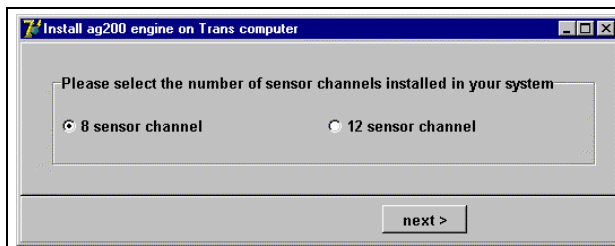


Figure 3:  
check this according to your system configuration

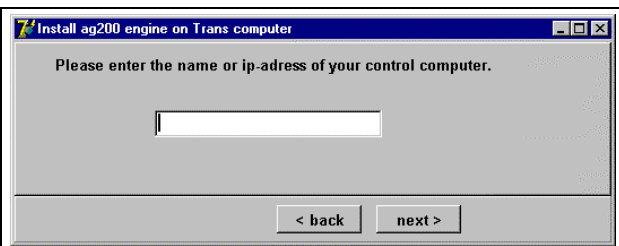


Figure 4: identify your computer that will control the AG200 system

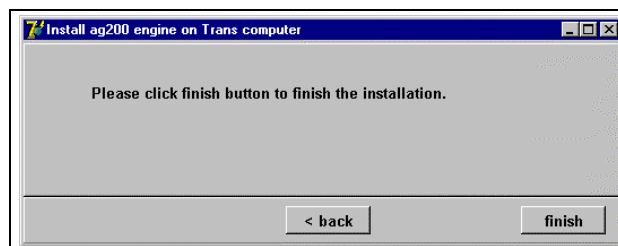


Figure 5: all done

### Set all shared folder to "not shared"

The AG200 software does no longer need shared folders.

### Shut down Trans-Computer

Select the Shut down option to shut down the computer. Do not use the Restart option.

## Prepare the PSR-Computer

### Unpack the psr.exe file to d:\soft\age200 on your PSR-Computer

Copy the file psr.exe to your PSR-Computer into the folder d:\soft\age200.

Execute this file and confirm that the Unzip to folder is set to d:\soft\age200 (similar to Figure 1).

Close the self extractor window and open the folder d:\soft\age200 with the windows explorer:

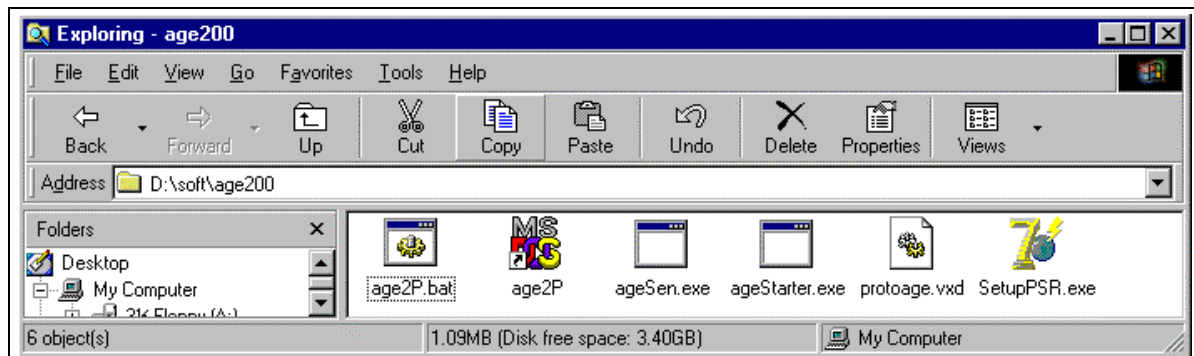


Figure 6: PSR-Computer folder after executing psr.exe

### Run SetupPSR.exe

Doubleclick the SetupPSR.exe to execute this file. There will come up two windows to perform the complete installation (see Figure 7 ).

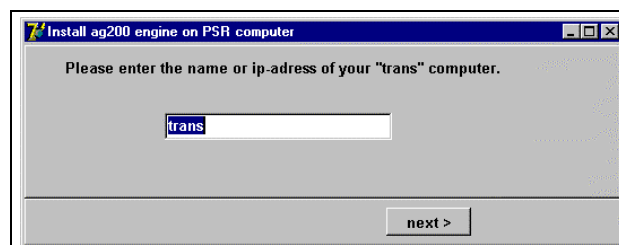


Figure 7: identify your Trans-Computer

### Set all shared folder to "not shared"

The AG200 software does no longer need shared folders.

### Shut down PSR-Computer

Select the Shut down option to shut down the computer. Do not use the Restart option.

## Prepare your computer to control the AG200 system

### Unpack the file to c:\ag200 on your Computer

Copy the file control.exe to your computer that will control the AG200 system to the folder c:\ag200.

Execute this file and confirm that the destination is c:\ag200.

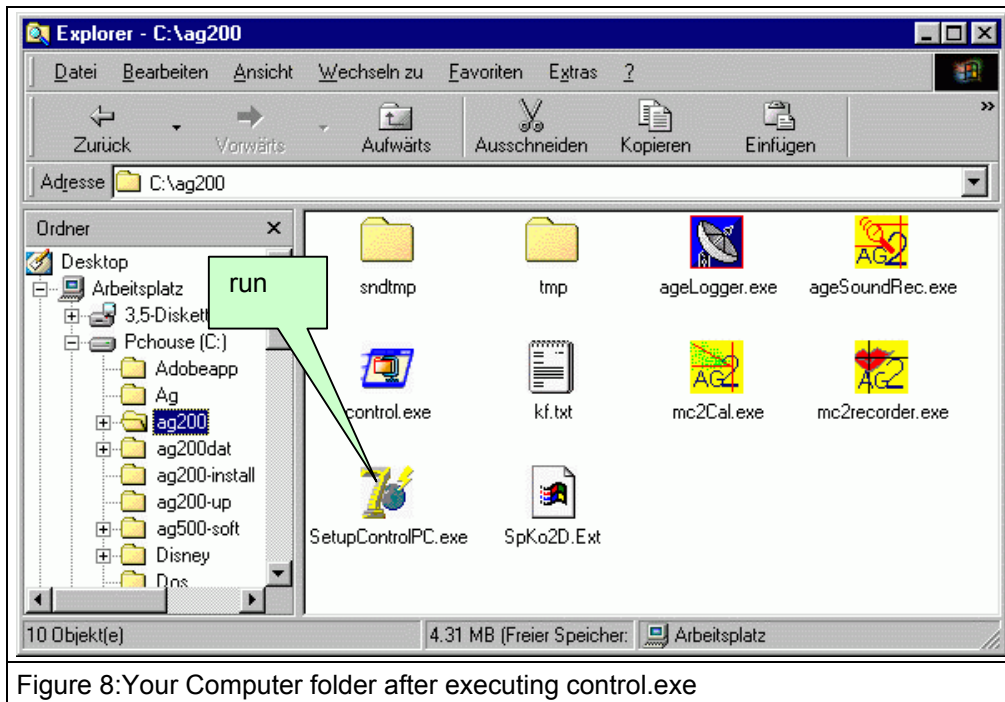


Figure 8: Your Computer folder after executing control.exe

### Run SetupControlPC.exe

Doubleclick the SetupControlPC.exe to execute this file. There will come up three windows to perform the complete installation (see Figure 9 to Figure 11).

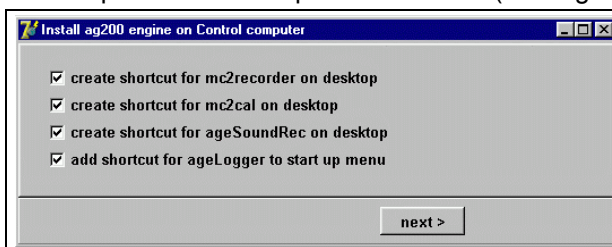


Figure 9: please leave all boxes checked

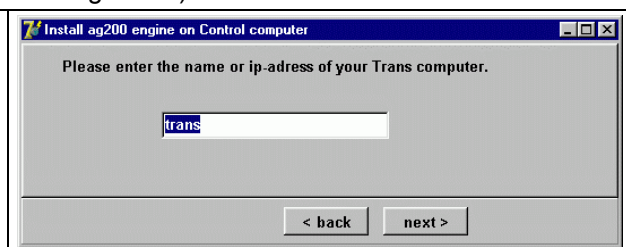


Figure 10: identify your Trans-Computer

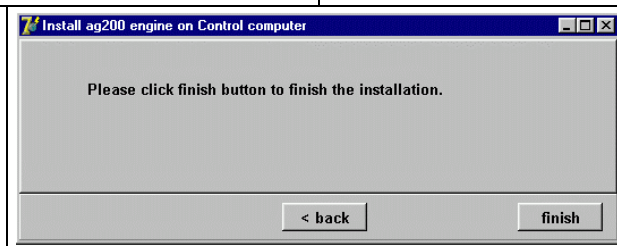


Figure 11: all done

### Restart your computer

Your computer has to reboot to activate the installed programs and shortcuts.

---

## Start up AG200 system

---

- Start the ageSoundRec program with the new icon on your desktop
  - Start the mc2recorder program with the new icon on your desktop
  - Switch the AG200 systems on power
  - For further steps refer to the document "AG200-manual.pdf"
- 

## Update the AGE200 software

---

- share a folder (read only) on your control computer
- copy the downloaded files "trans.exe" and "psr.exe" into this folder
- go to your Trans-Computer and copy the "trans.exe" to d:\soft\age200
- go to your PSR-Computer and copy the "psr.exe" to d:\soft\age200
- start the (old) mc2recorder program on your control computer and click "shutdown system"
- switch off Ag200 system power
- exit mc2recorder
- exit ageLogger program (see Figure 13 ) – **important** – otherwise this program will not be updated
- copy the "control.exe" program to c:\ag200 and follow the steps in "Prepare your computer to control the AG200 system"
- when your control computer came up after restart, switch on Ag200 system power

The "trans.exe" file on your Trans-Computer and the "psr.exe" on the PSR-Computer are executed automatically.

- Click "unzip" and "close" in the self extractor window (shown in Figure 1 ) on the Trans-Computer
- Click "unzip" and "close" in the self extractor window (shown in Figure 1 ) on the PSR-Computer

The SetupTrans.exe and the SetupPSR.exe will be executed automatically – they do not require any operator interactions. The self extractor files will be deleted and the next system power up is in normal manner.

## Trouble shooting

In case of any trouble, click the icon in the lower left corner from your desktop (see Figure 12).  
Click "Save log data to file" and select a folder to store the data.

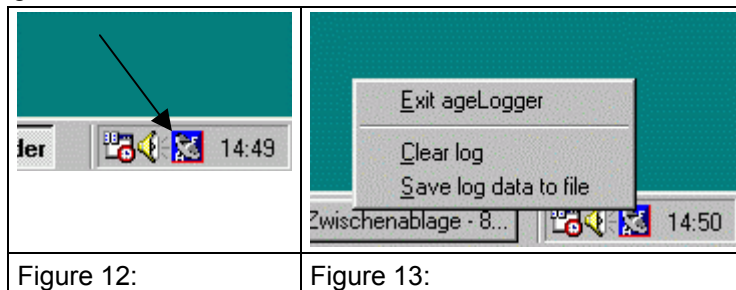


Figure 12:

Figure 13:

Send this \*.z file to Carstens Medizinelektronik GmbH ([bahne@articulograph.de](mailto:bahne@articulograph.de))

## Deactivate the AG200 software

### On Trans- and PSR Computer and on your control computer

Do a right click on the Start button (see Figure 14 )

Select:

Open | Programs | StartUp

to get the StartUp window as shown in Figure 15.

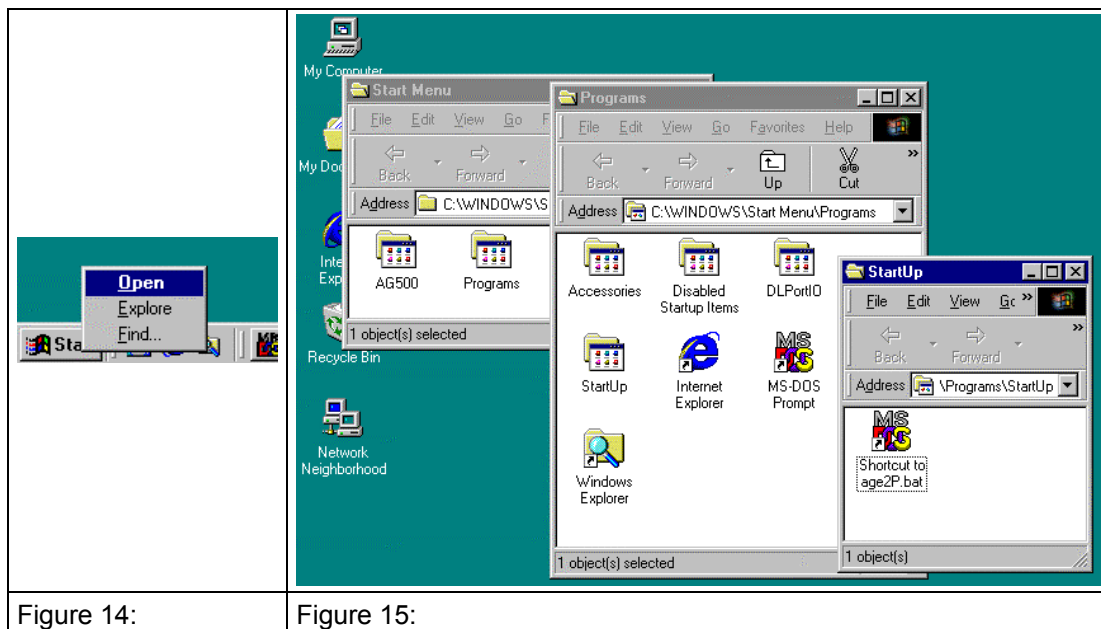


Figure 14:

Figure 15:

Delete the shortcut – no programs will get started with the next power up. The name of the shortcuts are:

age2P.bat on the PSR-Computer

age2T.bat on the Trans-Computer

agelogger on your computer